



# Kalmar Big Wheel

**DCG100-12BW**  
**DCG140-6BW**

22,000 & 31,000 lbs capacity



**KALMAR**

A red forklift is shown from a rear-quarter perspective, carrying a large, rectangular stack of lumber. The stack is composed of many layers of light-colored wood, with the ends of the logs visible, creating a textured, repetitive pattern. The forklift is on a dirt road, and in the background, there are more stacks of lumber and a line of evergreen trees under a clear sky. The entire image is framed by a thick red border.

# A smoother ride

The job must be done even on a bumpy road. But it can be hard with a regular forklift. It takes big wheels to level out the bumps. It takes Kalmar Big Wheel.

Anyone who has used a forklift at a sawmill or lumberyard knows how difficult it can be to work on an uneven surface, especially in the winter. Achieving the required precision in lifting and driving, while trying to cope with the uncomfortable shaking, is truly challenging.

We developed Big Wheel to give you a smoother ride. Equipped with oversized front wheels, these forklifts allow you to

work efficiently, and comfortably, even when surface conditions are poor.

You get superb traction and can work productively in rough conditions where high ground clearance is required. The big tyres also provide excellent suspension when driving over uneven surfaces.

Big Wheel forklifts are available in two size models, with a lifting capacity of 22,000 & 31,000 lbs capacity, respectively. As part of the Kalmar G generation, Big Wheel offers a range of benefits including highest operator safety and ergonomics.

# G generation excellence

Big Wheel is part of Kalmar's G generation of forklift trucks. Every G generation forklift comes equipped with a set of technically advanced features that add to the driver's operating experience and performance.

The G generation marked the introduction of Kalmar's renowned EGO cabin, which truly puts the operator in the driver's seat. The idea behind the cabin was to give operators the best possible working environment – allowing them to pay full attention to the work at hand.

With its excellent 360-degree view, ergonomically designed controls, tiltable steering wheel and adjustable seat, the EGO cabin has since its introduction become the preferred choice among health and safety aware customers around the world.

Other features that make these forklifts stand out from competition include an extra heavy duty mast, an intelligent electric system, and a variable hydraulic system that improves manoeuvrability and saves fuel.



*Designed specifically for the lumber industry: An optional reversible cooling fan helps clear the cooler from harmful dust. An optional rotatable driver's seat lets the driver go 'forward in reverse' with unobstructed view even when fully loaded.*

## Big is beautiful

Superb manoeuvrability in uneven terrain. 11.8" ground clearance under the mast. Excellent suspension thanks to the 23.5R25/24PR front tyres. That's Big Wheel in a nutshell.



## Clever radiator cleaning

You can use the optional reversing cooling fan to blow the radiator clean from potentially harmful dirt, dust or particles. Perfect when your Big Wheel is operated in sawmills and other dusty environments.

## A forklift with a view

The EGO cabin's excellent 360-degree view makes it safe and easy to operate your Big Wheel forklift. The work console is easy to use and understand. All the necessary controls, switches, levers and indicators are easily accessible.



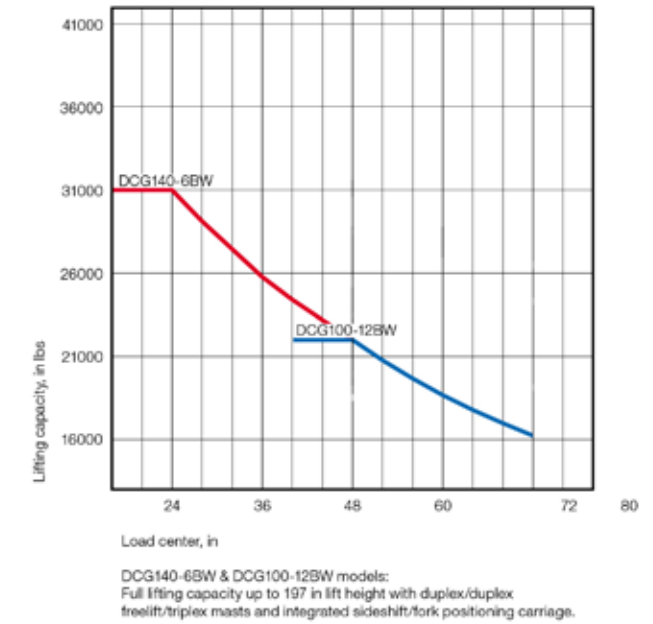
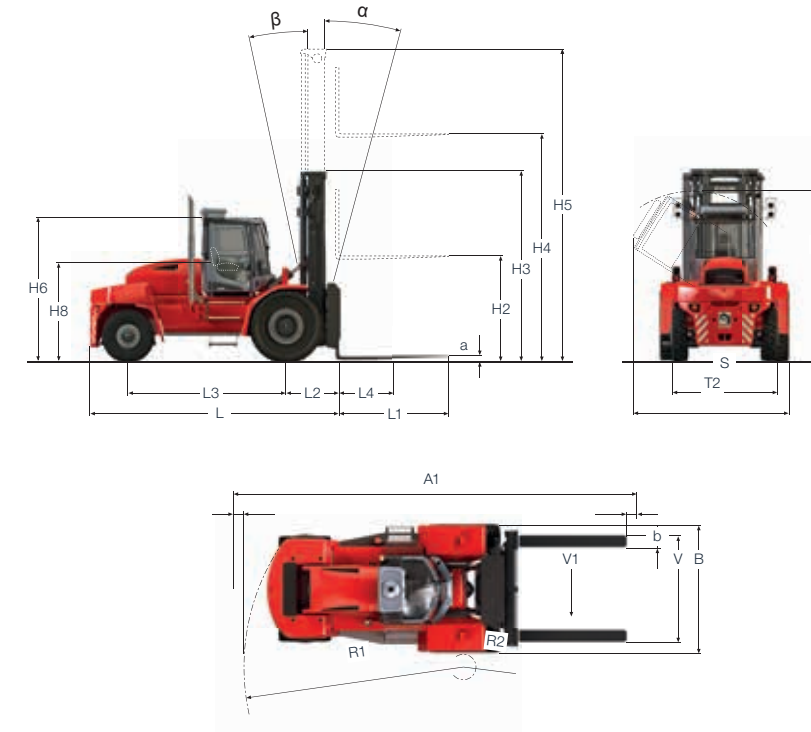
# Drivetrain and performance

| ENGINE   |                 | Cummins B6.7 (225 hp)<br>with ZF 3WG171 |  |
|--|-----------------|---|--|
| Manufacturer's type designation                        |                 | Cummins QSB6,7 (Turbo-Intercooler)      |  |
| Fuel, type of engine                                   |                 | Diesel, 4-stroke                        |  |
| Rating ISO 3046 / at revs                              | hp / rpm        | 225 / 2200                              |  |
| Peak torque ISO 3046 / at revs                         | lbf-ft / rpm    | 700 / 1500                              |  |
| Number of cylinders / displacement                     | in <sup>3</sup> | 6 / 360                                 |  |
| Fuel consumption, normal driving                       | gal/h           | 2.0-2.6                                 |  |
| Diesel Exhaust Fluid (DEF) consumption, normal driving | % of diesel     | 3-5%                                    |  |
| Emission standard                                      |                 | Tier 4F                                 |  |

| GEARBOX & MISC                       |        | ZF 3WG171                                    |  |
|--------------------------------------|--------|--|--|
| Manufacturer's type designation      |        | ZF 3WG171                                    |  |
| Clutch, type                         |        | Torque converter                             |  |
| Gearbox, type                        |        | Hydrodynamic Powershift                      |  |
| Numbers of gears, forward / reverse  |        | 3 / 3  |  |
| Alternator, type / power             | Amp    | AC / 70                                      |  |
| Starting battery, voltage / capacity | V / Ah | 2x12 / 145                                   |  |
| Driving axle, manufacturer / type    |        | Kessler D81 / Differential and hub reduction |  |

| PERFORMANCE              |                          | DCG140-6BW | DCG100-12BW |
|--------------------------|--------------------------|------------|-------------|
| Lifting speed            | Unloaded (ft/s)          | 1.3        | 1.3         |
|                          | At rated load (ft/s)     | 1.0        | 1.0         |
| Lowering speed           | Unloaded (ft/s)          | 1.0        | 1.0         |
|                          | At rated load (ft/s)     | 1.3        | 1.3         |
| Travelling speed, F/R    | Unloaded (mph)           | 15.5       | 15.5        |
|                          | At rated load (mph)      | 13.7       | 13.7        |
| Gradeability, max.       | Unloaded (%)             | 91         | 91          |
|                          | At rated load (%)        | 44         | 51          |
| Gradeability, at 1.2 mph | Unloaded (%)             | 58         | 58          |
|                          | At rated load (%)        | 31         | 36          |
| Drawbar pull             | Max. (lbf)               | 13,200     | 13,200      |
| Noise level, inside      | LpAZ*, EGO cabin (dB(A)) | 73         | 73          |
|                          | LpAZ*, EGO OHG (dB(A))   | 85         | 85          |
| Noise level, outside     | LWA** (dB(A))            | 108        | 108         |

\* LpAZ according to EN12053 \*\* LWA according to 2000/14/EC



|            | MAIN DATA  | DCG140-6BW            |                       | DCG100-12BW                 |                      |
|------------|--|-----------------------|-----------------------|-----------------------------|----------------------|
|            |  | Model designation     | Power source          | Rated capacity / rated load | Load center distance |
| WEIGHTS    | Service weight (unloaded, front + rear)            | 46,297                | 45,634                |                             |                      |
|            | Axle load front; unloaded                          | 24,691                | 24,691                |                             |                      |
|            | Axle load front; at rated load                     | 71,870                | 62,390                |                             |                      |
|            | Axle load rear; unloaded                           | 21,605                | 20,943                |                             |                      |
| WHEELS     | Type, front / rear                                 | Pneumatic / Pneumatic | Pneumatic / Pneumatic |                             |                      |
|            | Tire size, front                                   | 23.5R25/24PR          | 23.5R25/24PR          |                             |                      |
|            | Tire size, rear                                    | 12.00 - 20/20PR       | 12.00 - 20/20PR       |                             |                      |
|            | Number of wheels, front / rear (x = driven wheels) | 2x / 2                | 2x / 2                |                             |                      |
| DIMENSIONS | Mast tilt, $\alpha$ = forward / $\beta$ = backward | 15 / 15               | 15 / 15               |                             |                      |
|            | Height of mast lowered                             | 167                   | 167                   |                             |                      |
|            | Lift height  | 197                   | 197                   |                             |                      |
|            | Height of mast extended                            | 266                   | 266                   |                             |                      |
|            | Truck height - EGO / OHG cabin roof                | 123                   | 123                   |                             |                      |
|            | Seat height  | 79                    | 79                    |                             |                      |
|            | Height when tilting EGO cab / OHG                  | 142                   | 142                   |                             |                      |
|            | Width when tilting EGO cab / OHG                   | 138                   | 138                   |                             |                      |
|            | Truck length (to face of forks)                    | 216                   | 217                   |                             |                      |
|            | Truck width  | 110                   | 110                   |                             |                      |
| OTHERS     | Operating pressure for hydraulics                  | 2755                  | 1812                  |                             |                      |
|            | Hydraulic oil tank, capacity                       | 39.6                  | 52.8                  |                             |                      |
|            | Fuel tank, capacity                                | 55.5                  | 55.5                  |                             |                      |
|            | Diesel Exhaust Fluid (DEF) tank, capacity          | 3.9                   | 3.9                   |                             |                      |





# KALMAR

Making your every move count

Kalmar offers the widest range of cargo handling solutions and services to ports, terminals, distribution centres and to heavy industry. Kalmar is the industry forerunner in terminal automation and in energy efficient container handling, with one in four container movements around the globe being handled by a Kalmar solution. Through its extensive product portfolio, global service network and ability to enable a seamless integration of different terminal processes, Kalmar improves the efficiency of every move. [www.kalmarglobal.com](http://www.kalmarglobal.com)

Kalmar USA  
415 East Dundee St.  
Ottawa, KS 66067, USA  
tel. +1-785-242-2200  
fax +1-785-242-8573  
web. [kalmarusa.com](http://kalmarusa.com)

[www.kalmarglobal.com](http://www.kalmarglobal.com)

Published by Kalmar, part of Cargotec. Copyright Cargotec. All rights reserved.